

# Imperial Heritage 4\*

Valid From 02 Jan - 31 Mar 2019



Deluxe	Adult			Child		Extension		
	Single	Twin	3rd Adult	With Bed	No Bed	Sgl/Twin	Extra Bed	Chd B'fast
Sun - Thur	115	85	89	85	59	65	35	8
Fri & Sat / School Holiday	125	89	95	89	65	75		
Peak (02 - 07 Feb)	149	105	99	95	69	89		

School Holidays: 16 - 24 Mar

### Package Include:

Tourcode: MKZFE

- ~ Two way Coach Transfer Singapore - Hatten Coach Bay - Singapore by SVIP 28 - 40 Seater Coach
- ~ One night accommodation at Imperial Heritage Hotel Melaka with Breakfast

### Package Exclude:

- ~ Tourism Tax: MYR10 per room per night(Pay upon check-in)

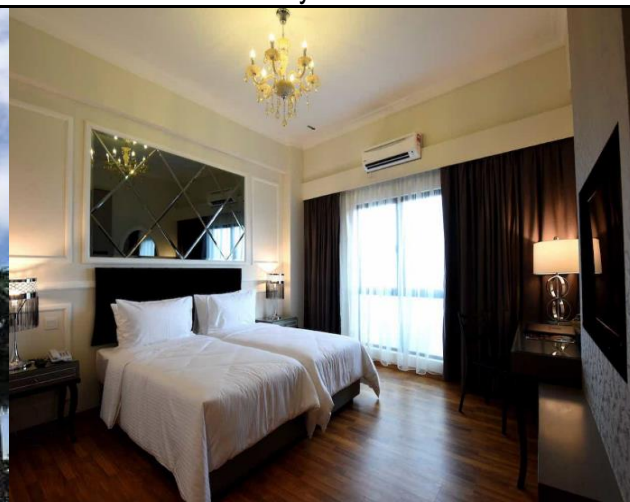
Update by JT, 28 Nov

### Remark:

- PZ Transfer to 2nd Link as and when necessary
- Coach and Accommodation is subjected to availability

Optional Coach insurance @ S\$2.50 Per Adult / Child

Coach Schedule	Please kindly assemble at Pick up point 30 Minutes before departure	
Singapore - Melaka	0700	Our Tampines Hub Coach Bay
	0730	Singapore Flyer WTS Counter # 01-06D
	0800	Big Box Main Entrance Opposite Ng Teng Fong Hospital
Melaka - Singapore	1500	Assemble at Hatten Hotel Coach Bay



Booking Hotline: 6466 8558

**WTstravel**

#### Our Branches

- #B1-49 AMK Hub
- #01-08 Balestier Plaza
- #B1-59 Bukit Timah Plaza
- #04-06 Bukit Panjang Plaza
- #05-19 Causeway point
- #04-11 Century Square
- #04-04 Compass One
- #01-02 Geylang West CC
- #03-25D/E Jurong Point
- #04-14 Lot One
- #B1-38 Our Tampines Hub
- #03-10 Sun Plaza
- #B2-15 Waterway Point



www.wtstravel.com.sg



enquiries@wtstravel.com.sg



www.instagram.com/wtstravelsg



www.facebook.com/WTSTravel



WTSTravelSG