

Imperial Heritage 4*

Valid From 01 Apr - 30 Jun 2019



Imperial Deluxe	Adult			Child		Extension		
	Single	Twin	3rd Adult	With Bed	No Bed	Sgl/Twin	Extra Bed	Chd B'fast
Sun - Thur	115	85	N/A	N/A	59	65	N/A	8
Fri & Sat / School Holiday	125	89			65	69		
Peak	149	109			69	89		

Heritage Deluxe	Adult			Child		Extension		
	Single	Twin	3rd Adult	With Bed	No Bed	Sgl/Twin	Extra Bed	Chd B'fast
Sun - Thur	129	89	89	85	59	79	35	8
Fri & Sat / School Holiday	139	95	95	89	65	85		
Peak	169	115	99	95	69	105		

School Holidays: 01 - 30 Jun | Peak: 01 May / 05, 06 Jun

Package Include:

Tourcode: MKZFE

- ~ Two way Coach Transfer Singapore - Hatten Coach Bay - Singapore by SVIP 28 - 40 Seater Coach
- ~ One night accommodation at Imperial Heritage Hotel Melaka with Breakfast

Package Exclude:

- ~ Tourism Tax: MYR10 per room per night(Pay upon check-in)

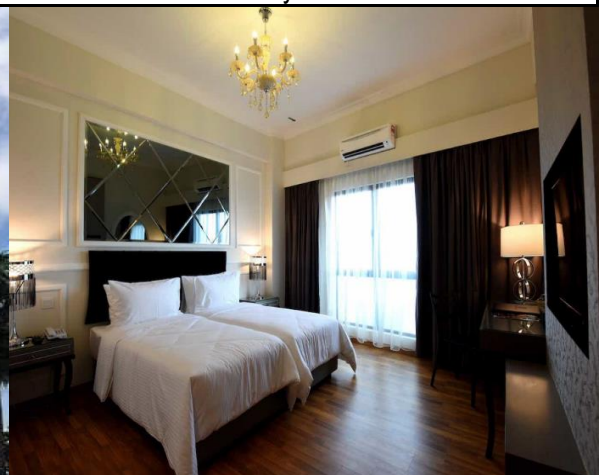
Update by JT, 18 Feb

Remark:

- PZ Transfer to 2nd Link as and when necessary
- Coach and Accommodation is subjected to availability

Optional Coach insurance @ S\$2.50 Per Adult / Child

Coach Schedule	Please kindly assemble at Pick up point 30 Minutes before departure	
Singapore - Melaka	0700	Our Tampines Hub Coach Bay
	0730	Singapore Flyer WTS Counter # 01-06D
	0800	Big Box Main Entrance Opposite Ng Teng Fong Hospital
Melaka - Singapore	1500	Assemble at Hatten Hotel Coach Bay



Our Branches

#B1-49 AMK Hub
#01-08 Balestier Plaza
#B1-59 Bukit Timah Plaza
#04-06 Bukit Panjang Plaza
#05-19 Causeway point

#04-11 Century Square
#04-04 Compass One
#01-02 Geylang West CC
#03-25D/E Jurong Point

#04-14 Lot One
#B1-38 Our Tampines Hub
#03-10 Sun Plaza
#B2-15 Waterway Point

Booking Hotline: 6466 8558



www.wtstravel.com.sg



enquiries@wtstravel.com.sg



www.instagram.com/wtstravelsg



www.facebook.com/WTSTravel



WTTravelSG

