

# The Straits Hotel & Suites 4\*

Valid From 01 Apr - 30 Jun 2019



Deluxe	Adult			Child		Extension		
	Single	Twin	3rd Adult	With Bed	No Bed	Sgl/Twin	Extra Bed	Chd B'fast
Sun - Thur	125	89	89	85	59	75	35	8
Fri & Sat / School Holidays	135	95	95	89	65	79		
Peak (01 May / 05, 06 Jun)	149	105	99	95	69	89		

Premier Suite	Adult			Child		Extension		
	Single	Twin	3rd Adult	With Bed	No Bed	Sgl/Twin	Extra Bed	Chd B'fast
Sun - Thur	155	99	89	85	59	105	35	8
Fri & Sat / School Holidays	165	105	95	89	65	109		
Peak (01 May / 05, 06 Jun)	179	119	99	95	69	119		

**School Holidays: 01 - 30 Jun**

**Package Include:**

Tourcode: MKZFE

- ~ Two way Coach Transfer Singapore - Straits Hotel - Singapore by SVIP 28 - 40 Seater Coach
- ~ One night accommodation at Straits Hotel & Suites Melaka with Breakfast

**Package Exclude:**

- ~ Tourism Tax: MYR10 per room per night(Pay upon check-in)

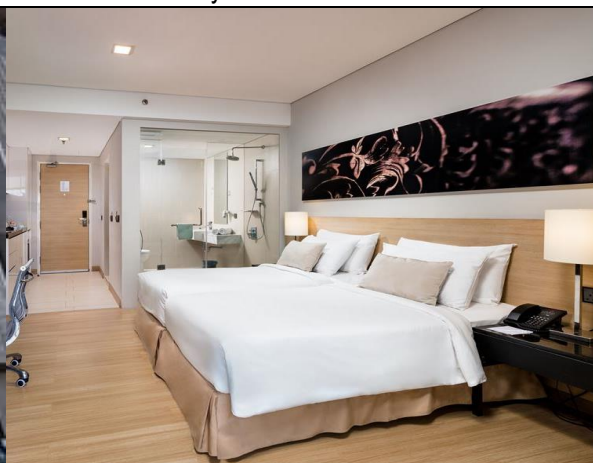
Update by JT, 18 Feb

**Remark:**

- PZ Transfer to 2nd Link as and when necessary
- Coach and Accommodation is subjected to availability

**Optional Coach Insurance @ S\$2.50 Per Person**

Coach Schedule	Please kindly assemble at Pick up point 15 minutes before departure	
Singapore - Melaka	0700	Our Tampines Hub Coach Bay
	0730	Singapore Flyer WTS Counter # 01-06D
	0800	Big Box Main Entrance (Opposite Ng Teng Fong Hospital)
Melaka - Singapore	1445	Assemble at Straits Hotel & Suites Lobby



**Booking Hotline: 6466 8558**



**Our Branches**

- #B1-49 AMK Hub
- #01-08 Balestier Plaza
- #B1-59 Bukit Timah Plaza
- #04-06 Bukit Panjang Plaza
- #05-19 Causeway point

- #04-11 Century Square
- #04-04 Compass One
- #01-02 Geylang West CC
- #03-25D/E Jurong Point

- #04-14 Lot One
- #B1-38 Our Tampines Hub
- #03-10 Sun Plaza
- #B2-15 Waterway Point

www.wtstravel.com.sg

enquiries@wtstravel.com.sg

www.Instagram.com/wtstravelsg

www.Facebook.com/WTstravel

WTSTravelSG

